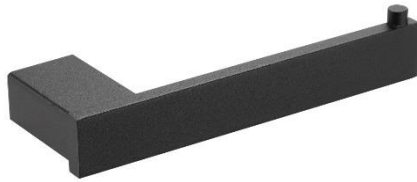


HARMONIA SERIES

Toilet roll holder



AI1421B
Black finish



AI1421C
Bright finish



AI1421CS
Satin finish

General Description

- Bathroom toilet roll holder without cover made of AISI 304 stainless steel, with a hidden wall mounting system, from Mediclinics' Harmonia series.
- With a simple and discrete design, this toilet roll holder is ideal for both private and public-use bathrooms, in places such as hotels, bars, restaurants, offices, etc.
- The supporting axis for the roll has a stopper to prevent the roll from falling off.
- Suitable for household toilet rolls, this toilet roll holder with shelf is one of the essential bathroom accessories.
- Includes stainless steel hardware for installation on brick walls.

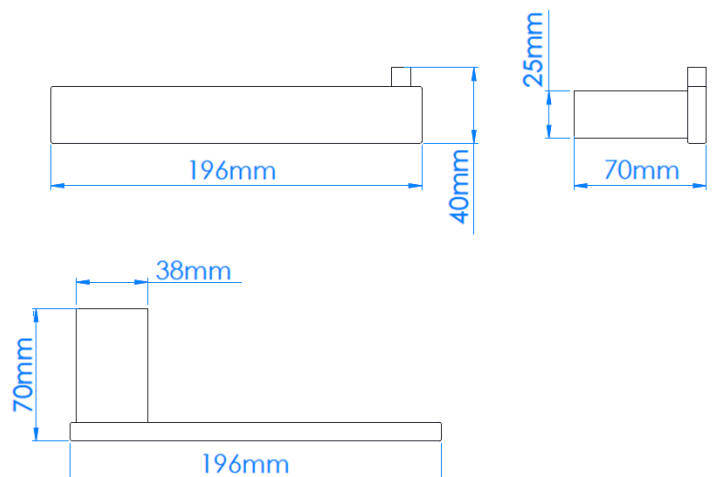
Components and materials

- **AI1411B:** toilet roll holder made of AISI 304 stainless steel black finish.
- **AI1411C:** toilet roll holder made of AISI 304 stainless steel bright finish.
- **AI1411CS:** toilet roll holder made of AISI 304 stainless steel satin finish.
- **ROLL AXIS:** made of AISI 304 stainless steel rectangular tube.
- **WALL BRACKETS:** two units made of AISI 304 stainless steel rectangular tube of 38x25mm and 1mm de thick. Attached to the bar by means of a threaded stud and nut.
- **WALL ANCHORS:** two units made of aluminum. Attached to the wall bracket by means of two screws. It has two holes for wall mounting. They always remain hidden from the user's view.

Technical specifications

Dimensions	196 x 40 x 70mm
Wall bracket thickness	1.0 mm
Net weight	260 g

Dimensions



Dimensions: ± 4%