

SENSOR OPERATED

Dualflow Plus



M14A
White finish



M14AB
Matte black finish



M14ABT
Matte total black finish



M14ACS
Satin finish

General description

- The Dualflow Plus is a fast, energy efficient, ecologic, hygienic & stylish hand dryer, suitable for high traffic facilities.
- "Hands in" model, it has two pairs of IR sensors on both sides of the upper covers for instant hand detection.
- Maximum air speed 410 Km/h.
- Dries hands in only 10 / 15 seconds.
- Motor power adjustable, allowing electricity consumption to be regulated (between 420 and 1.500W).
- It incorporates a HEPA media filter that filters the solid particles in suspension (pollen, dust mites, tobacco smoke, etc.) significantly improving air quality.
- It can be delivered, optionally, with an ionizer ("Ion Hygienic" technology) that purifies the air through negatively charged particles (anions), eliminating most of the particles and germs carried by the air, making it healthier and purer.
- Biocote® antimicrobial and antibacterial protection technology based on silver ions. These ions inhibit the reproduction of micro-organisms in the product throughout its lifetime.
- 30 seconds safety timer.
- Lowest noise level in its category. (62 dBA in ECO mode).
- Easy maintenance, it can be connected, optionally, directly to the main waste pipe of the bathroom to eliminate waste water from hand drying.

Components and materials

- **COVER:** made of high impact ABS.
- **BASE PLATE:** made of plastic PA6V0.
- **MOTOR:** high-speed class F universal brush motor, adjustable from 19000 to 30000 rpm, allowing electricity consumption and sound pressure to be regulated.
- **HEATING ELEMENT:** minimum waved wire NiCr heating element of 400W, mounted on a mica frame that incorporates a self-resettable thermal cut-off which disconnect the whole appliance. The heating element can be disconnected by means of an ON/OFF switch.
- **HEPA MEDIA FILTER:** cartridge that holds an HEPA media filter that filters suspended solid particles (pollen, dust mites, cigarette smoke, etc.), notably improving the air quality. Furthermore, this cartridge also contains an activated carbon filtering medium that neutralizes odours and absorbs fumes and gases, helping avoid bad odours.
- **IONIZER:** cleans and purifies the air through negative ions (anions) which remove microscopic particles from the air making it healthier (optional).
- **CONNECTION TO THE WASTE PIPE:** optionally, and by means of a kit for the connection to the waste pipe, code KITDESM14A, the Dualflow Plus can be connected directly to the waste pipe. Thus, the emptying of water tank is eliminated because the water always goes directly to the waste pipe.

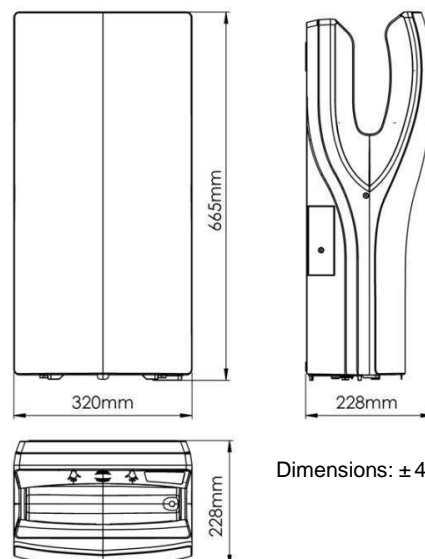
8-OP-DO-FT

Technical Specifications

Voltage	220- 240 V
Frequency	50/60 Hz
Electrical Isolation	Class I
Total power	420 – 1,500 W
Consumption	3.2 – 6.4 A
Motor power	420 – 1,100 W
Rpm	19,000 – 30,000
Heating element power	400 W (with "ON/OFF" switch)
Dimensions	665x320x228 mm
Weight	8.3 Kg
Cover thickness	3 mm
Drying time	8-15 sec.
Effective airflow	94-165m ³ /h –1,570-2,750 l/min
Air velocity	234 – 410 Km/h
Air temperature (10 cm distance/21°C)	40 °C
Sound pressure (*) (at 2m)	62 – 72 dBA
Protection rating	IPX4

(*) According UNE EN ISO 11201:2010 V2

Dimensions



Dimensions: ± 4%

- **INNER TANK:** collects the water. It is removable and it has an external valve for easy emptying.
- Optionally, and by means of a kit for the connection to the waste pipe, code KITDESM14A, the Dualflow Plus can be connected directly to the waste pipe.
- **AUTO CHECK-IN LIGHTING PANEL:** for fast diagnosis of the dryer (green - machine running, blue - full tank, red - check engine). Optical and acoustic warning of full tank.
- **ODOR NEUTRALIZER:** for a cleaner and more pleasant atmosphere in the bathroom. (optional).

Codes

HAND DRYER CODES					
Cover material	Cover finish	Neither connection to the waste pipe nor ionizer	With connection to the waste pipe	With ionizer	With connection to the waste pipe and ionizer
ABS	White	M14A	M14A-DES	M14A-I	M14A-DES-I
ABS	Matte black	M14AB	M14AB-DES	M14AB-I	M14AB-DES-I
ABS	Matte total black	M14ABT	M14ABT-DES	M14ABT-I	M14ABT-DES-I
ABS	Satin	M14ACS	M14ACS-DES	M14ACS-I	M14ACS-DES-I

Operation

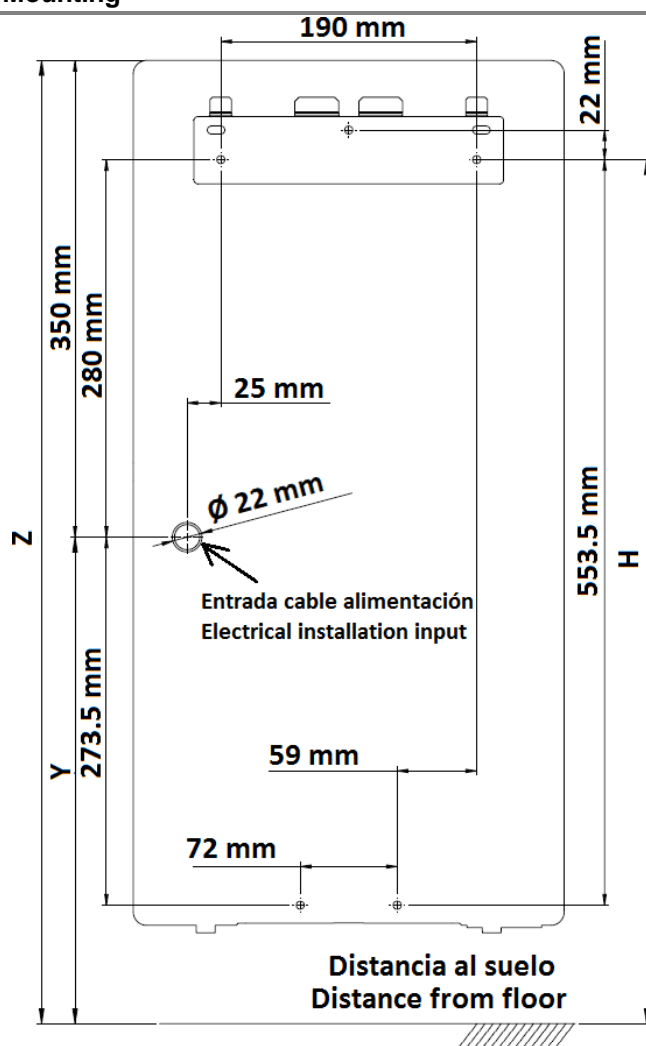
Place the hands between the air outflow valves, inside the hand dryer. The dryer will start automatically, and go on with no interruption as long as the hands are kept in the detection range of the sensor. Move the hands vertically in order to dry them completely. The appliance will stop 2 seconds after the hands are removed from the airflow.



Text for prescription

Hands-in automatic hand dryer shall be equipped with infrared sensors on both upper sides (barrier-type detection). The unit shall weigh 8,30 kg. The housing shall be made of ABS and shall be available in 4 finishes: white, matte black, matte total black and satin. The housing shall have a thickness of 3 mm. The dryer shall be equipped with a brushed Class F motor with an adjustable speed range between 19.000 and 30.000 rpm and a motor power of 420–1.100 W. A heating element with on/off switch and 400 W of power shall be included. The unit shall operate at a frequency of 50/60 Hz and a voltage of 220–240 V, with a total power range of 420–1.100 W with a consumption of 3,2–6,4 A. Drying time shall be between 8 and 15 seconds, with an airspeed of 234–410 km/h. The unit shall include a HEPA filter as standard and shall offer an optional ionizer. All user- contact surfaces shall be protected with an antimicrobial technology based on silver ions. The unit shall be equipped with a removable water collection tank with a volume of 0,5 L and shall offer the possibility of drainage connection. The dryer shall be HACCP certified. The unit shall comply with all applicable hand dryer standards (EN 60335-1, EN 60335-2-23, EN 61000-3-2, and EN 61000-3-3).

Recommended heights distance from the floor



Z = 92 cm
(36 1/4")

87 cm
(34 1/4")

$$H = \begin{matrix} 85 \text{ cm} \\ (33 \frac{1}{2} \text{''}) \end{matrix}$$

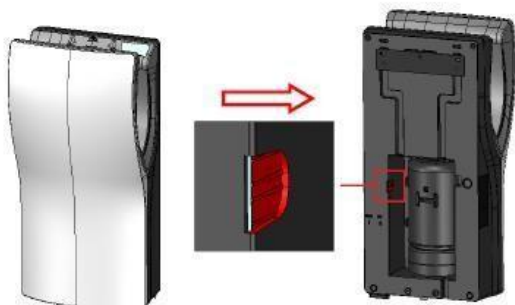
80 cm
(31 1/2")

$$y = \frac{57 \text{ cm}}{(22 \frac{1}{2} \text{")}}$$

52 cm
(20 1/2")

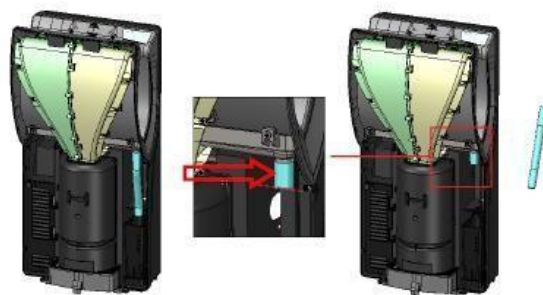
Connection to the waste pipe

1



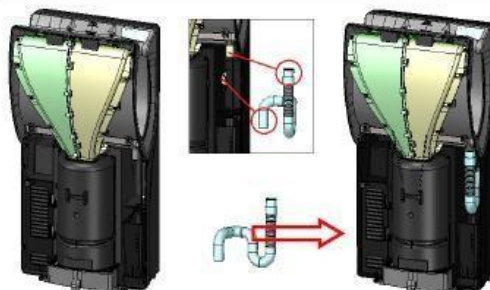
Break the flap on the rear side of the hand dryer base. Use a screwdriver and a hammer to do it more easily

2



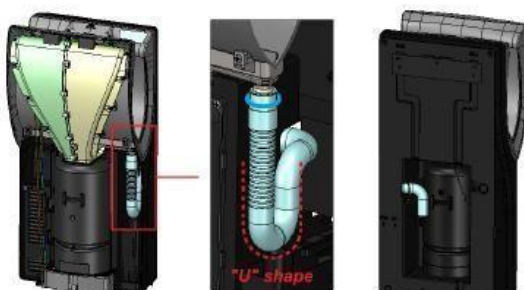
Disassemble the frontal cover and cut the original drain tube skim to the plastic union using a cutter

3

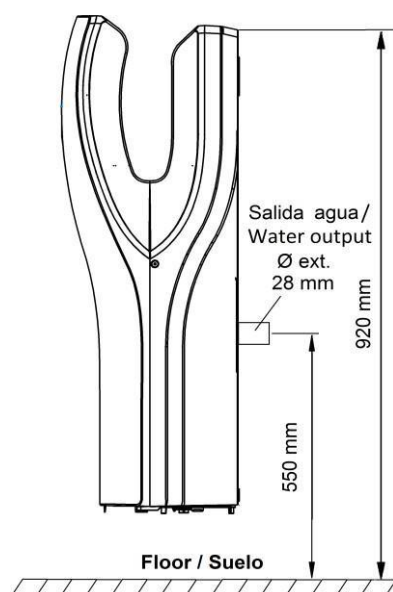


Introduce one end of the new tube through the new hole in the backside and fix the other side over the remaining part of the cut old tube using the provided flange

4



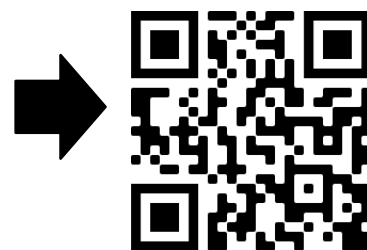
Confirm that the new tube maintains a "U" shape once assembled and connect the backside part of the tube to the waste pipe. Finally, assemble the frontal cover.



If the hand dryer is installed according to the installation instructions (upper back part of the dryer at 920 mm height), the main drain pipe installation should be approximately 450 mm from the water outlet height to the floor.

For other installation heights, the proportions shown in the figure on the left side must be taken into account.

For more information about the connection to the waste pipe, watch the following video:



Certificates and Qualifications



Mediclinics, S.A., reserves the right to make changes and/or modifications to the products and their specifications without prior notice.
Review: 08-25 © mediclinics S.A.



8-OP-DO-FT