

MEDICLINICS HAND DRYERS

Product family

Hand dryers

All-in-one washing and drying units UCM092A, UCM093A. Washing and drying built into the washbasin.

ECO-Fast hand dryers. U-flow M23A, Dualflow Plus M14A, Dualflow Plus with brushless motor M24A, Machflow Plus M09A, Machflow Plus with brushless motor M19A, Speedflow Plus M17A.

Solutions for mounting behind the mirror. High-speed automatic hand dryers (M17A), automatic soap dispensers, C/Z paper towel dispensers and automatic water taps (GA024BTM), designed to be fitted behind a mirror.

Automatic hand dryers

MEDICLINICS HAND DRYERS



mediclinics

Automatic hand dryers

Product family representative

Series UCM092A, UCM093A, M23A, M14A, M24A, M09A, M09A, M19A, M17A, GA024BTM.

Description

Mediclinics supplies a wide range of high quality and hardwearing electric hand dryers manufactured with innovative technology featuring brushless motors, HEPA filter, and Ion Hygienic and Biocote antimicrobial technologies. It also offers the All-in-One system range with integrated hand wash, soap dispenser and hand dryer as well as options designed to be mounted behind the mirror. A Mediclinics hand dryer is synonymous with hygiene, sustainability, safety and energy saving.

Contact information

MEDICLINICS www.mediclinics.es
C/ de la Industria, 54, Entresuelo, 08025, Barcelona
Tel. +34 934 464 700 00
info@mediclinics.com

Date of issue: October 2024

Summary table: Environmental parameters where the material makes a specific contribution.

Details can be found in the respective VERDE, LEED and BREEAM environmental certification sheets

Supporting documents Certifications: DAP, CSR, REACH Self-declarations Potential

Mobility Plot		Solar Reflectance Index SRI	Rainwater management	Exterior lighting control.	...					
Energy Atmosphere		Embedded energy	Greenhouse gases	Reduction in energy demand	Equipment efficiency	Other pollutant gases	Renewable energy	Energy management	...	
Materials		Accredited sourcing	Pre-consumer recycling	Post-consumer recycling	Reuse potential	Certified timber	Construction site waste	Chemical composition	Waste	
Water		Usage < benchmark	Water management	...						
Indoor environment		Low VOC emissions	Low formaldehyde emissions	Comfort control	Lighting comfort	Sound comfort	Air quality	...		
Innovation		Innovation in Design	...							

NOTES:

- The information in this document on compliance with the credits for the chosen environmental certification system of study (VERDE, LEED or BREEAM) is based on the information provided by the company. The validity of the information and data provided by the company needs to be verified in the process of any of the seals in order to ensure the possibility of compliance with these credits.
- This document does not constitute certification of the product and does not warrant compliance with local regulations.
- The conclusions of this study apply only to the products mentioned in this report and are subject to the invariability of the product's technical conditions.
- The validity of this document is subject to the expiry of the supporting documents or changes in regulations and/or versions of environmental certification seals.
- This document provides information on the possible contribution of the products studied to gaining VERDE, LEED and BREEAM certifications. However, the final decision on whether or not a product meets the requirements for LEED certification is the sole responsibility of the GBCE (Green Business Certification Inc.).

Table of contents

CRITERIA OVERVIEW VERDE	4
• NR 01, Water usage in sanitary fixtures	5
CREDIT OVERVIEW LEED v4	7
WATER EFFICIENCY (WE)	8
• Reduction in indoor water use (prerequisite)	8
• Reduction in indoor water use (credit)	8
ENERGY AND ATMOSPHERE (EA)	10
• Minimum Energy Yield (pre-requisite)	10
• Optimization of energy efficiency (credit)	10
• Energy Efficiency (credit)	10
MATERIALS AND RESOURCES (MR)	12
• MR Waste yield	12
INNOVATION IN DESIGN (ID)	13
• Innovation	13
REQUIREMENTS OVERVIEW BREEAM	14
MANAGEMENT	15
• MAN 03, Construction Site Impacts	15
• MAN 03, Responsible Construction Practices	15
WATER	16
• WAT 01, Water Consumption	16
• WAT 04, Water Efficient Equipment: washbasin taps	16
INNOVATION	18
• INNOVATION	18

CRITERIA OVERVIEW

VERDE



NATURAL RESOURCES (NR)

➡ NR 01, Water usage in sanitary fixtures

VERDE Environmental Categories



Plot and
Placement



Energy and
Atmosphere



Natural
Resources



Environment
Quality



Service
Quality



Social Aspects



Innovation

VERDE Certification Standards

Buildings 2022

Building

UD IE

Urban Development Industrial Estates

CRITERIA SHEET

VERDE



CATEGORY

NATURAL RESOURCES

NR 01, Water usage in sanitary fixtures (VERDE Buildings 2022)

Objective Reduce the flow rates of sanitary fixtures to promote water savings.

Compliance information The **MEDICLINICS** product range of all-in-one water taps and hand dryers contribute to the credit compliance as they are included in the washbasin taps category.

The washbasin taps contribute to the evaluation of the criterion according to the percentage reduction compared to the baseline or reference case:

- Washbasin tap in private residential use: 6 l/min
- Washbasin tap in non-private residential use: 4.5 l/min

Below are the flow rates of the **MEDICLINICS** all-in-one taps and hand dryer:

MODEL	FLOW (l/min)
UCM092A	5
UCM093A	5.7 / 1.89 / 1.3
GA024BTM	5.7 / 1.89 / 1.3

The UCM093A and GA024BTM models can achieve different flow rates with the addition of accessories such as aerators or flow limiters as shown in the table above. However, this is a partial contribution to compliance with the credit as the percentage reduction depends on the sum of all the sanitary fittings and not just the washbasin taps.

The UCM093A or GA024BTM models in the 1.89 l/min or 1.3 l/min flow rate versions will be required to contribute to compliance in other than private residential use.

Assessment procedure The percentage reduction of drinking water usage in sanitary appliances is evaluated up to 100% (linear evaluation) of the criterion between:

- 10 and 30%, for projects in an area with a Water Exploitation Index (WEI+) less than 20.
- 15 and 30%, for projects in an area with a Water Exploitation Index (WEI+) greater than or equal to 20 and less than 40.
- 20 and 30% for projects in an area with a Water Exploitation Index (WEI+) greater than or equal to 40.

Sanitary appliances to be considered include:

- Kitchen taps
- Washbasin taps
- Shower taps
- Bath taps
- Toilets

- Urinals

Compliance must be justified using the NR 01 help tab of the VERDE 2022 qualification tool and by supporting the data with the technical data sheets showing the flow rates of the sanitary fittings and the calculation of the WEI+.

**Analysis
example**

NA

**Supporting
documents**

- *all-in-one-UCM092A Ver. 07-22*
- *all-in-one-M93A - 11.24*
- *Data Sheet BtM-GA024BTM - 11.24*

**Reference
standard**

NA

CREDIT OVERVIEW

LEED v4



Water Efficiency (WE)

- Reduction in indoor water use (prerequisite)
- Reduction in indoor water use (credit)



Energy & Atmosphere (EA)

- Minimum energy performance (pre-requisite)
- Energy efficiency optimization (credit)
- Energy performance (credit)



Materials & Resources (MR)

- MR Waste yield



Innovation in Design (ID)

- Innovation in Design. Exemplary performance

LEED Environmental Categories



(LT)
Location &
Transportation



(SS)
Sustainable
Sites



(WE)
Water
Efficiency



(EA)
Energy &
Atmosphere



(MR)
Materials &
Resources



(IEQ)
Indoor
Environmental
Quality



(ID)
Innovation
in Design



(RP)
Regional
Priority

LEED Certification Standards (v4)

EB Existing Building
NC New Construction
CI Commercial Interiors
CS Core & Shell
SNC School New Construction
SEB School Existing Building
MMR Multifamily Mid Rise

RNC Retail New Construction
REB Retail Existing Building
RCI Retail Commercial Interiors
HC Healthcare
HNC Hospitality-New Constr.
HEB Hospitality-Existing Building
HCI Hospitality-Commercial Int.

DCNC Data Center NC
DCEB Data Center EB
WNC Warehouse NC
WEB Warehouse EB
NDP Neighborhood Devel. Plan
ND Neighborhood Develop.
HM Homes

CREDITS SHEET

LEED v4



CATEGORY

WATER EFFICIENCY (WE)

- **Reduction in indoor water use (prerequisite)**
- **Reduction in indoor water use (credit)**
(NC, CS, CI, RNC, HNC, DCNC, WNC, SNC, HCNC, EB, SEB, REB, RCI, HC, HEB, DCEB, WEB, HM, MMR)

Objective Reduce water usage inside buildings.

Compliance information The following components of the **MEDICLINICS** all-in-one water tap and hand dryer product range contribute to the achievement of the prerequisite and the credit:

MODEL	FLOW (l/min)
UCM092A	5
UCM093A	5.7 / 1.89 / 1.3
GA024BTM	5.7 / 1.89 / 1.3

The washbasin taps contribute to the evaluation of the criterion according to the percentage reduction compared to the baseline or reference case:

- Washbasin tap in public use: 1.9 l/min (at 4.15 bar)
- Washbasin tap in private use: 8.3 l/min (at 4.15 bar)

The UCM093A and GA024BTM models can achieve different flow rates with the addition of accessories such as aerators or flow limiters as shown in the table above. However, this is a partial contribution to compliance with the credit as the percentage reduction depends on the sum of all the sanitary fittings and not just the washbasin taps.

The UCM093A or GA024BTM models in the 1.89 l/min, or ideally 1.3 l/m, flow rate versions will be required to achieve a reduction to contribute to compliance in public use.

Assessment procedure

The indoor water prerequisite evaluates water savings from the installation of water-efficient equipment (appliances, taps, toilets, urinals, etc.) with a minimum 20% reduction compared to the baseline or reference case.

By contrast, between 25% and 50% reduction is sought in the credit to earn points depending on the type of building (Schools, Hospitals, Hotels and Commercial Buildings only require a maximum 45% reduction).

Among other aspects, it evaluates whether the cooling towers and evaporative condensers are equipped with:

- Make-up water meters.
- Water conductivity monitors and overflow alarms.

- Efficient droplet separators which keep water droplet loss to a maximum of 0.002% of the recirculated water volume for counterflow towers and 0.005% of recirculated water flow for crossflow towers.

Analysis example

NA

Supporting documents

- ***all-in-one-UCM092A Ver. 07-22***
- ***all-in-one-M93A - 11.24***
- ***Data Sheet BtM-GA024BTM - 11.24***

Reference standard

- *Energy Policy Act (EPAcT) of 1992 and as amended: eere.energy.gov/femp/regulations/epact1992.html*
- *EPAcT 2005: eere.energy.gov/femp/regulations/epact2005.html*
- *International Association of Plumbing and Mechanical Officials Publication IAPMO/ANSI UPC 1-2006,*
- *Uniform Plumbing Code 2006, Section 402.0, Water-Conserving Fixtures and Fittings: iapmo.org*
- *International Code Council, International Plumbing Code 2006, Section 604, Design of Building Water*
- *Distribution System: iccsafe.org*
- *ENERGY STAR: energystar.gov*
- *Consortium for Energy Efficiency: cee1.org*
- *WaterSense: epa.gov/watersense*
- *IgCC/ASHRAE 189.1 cooling tower and evaporative condenser requirements:*
- *ashrae.org/resources--publications/bookstore/standard-189-1*



CATEGORY ENERGY AND ATMOSPHERE (EA)

- **Minimum Energy Yield (pre-requisite)**
- **Optimization of energy efficiency (credit)**
(NC, CS, CI, RNC, HNC, DCNC, WNC, SNC, HCNC, EB, SEB, REB, RCI, HC, HEB, DCEB, WEB, HM, MMR)
- **Energy Efficiency (credit)**
(EBOM)

Objective Achieving good energy efficiency of the building and its systems to reduce environmental and economic damage caused by excessive energy use.

Compliance information To justify energy efficiency and low emission criteria in LEED it is necessary to demonstrate reductions in primary energy consumption compared to the reference building as set by ASHRAE 90.1. To assess this, a simulation must be performed and the target building compared to a reference building.

NOTE: Process loads, such as office and other equipment, must be estimated for the justification of LEED requirements in the energy simulation. They will depend on the building type or space type and should be assumed to be identical in the calculation of the proposed and reference building, except in cases where an innovation has been implemented and accepted by the certification authority. Variations may be allowed by the certifying authority in the power, schedules, or control sequences of the equipment modelled in the reference building from the proposed building, based on documentation that the equipment installed in the proposed design represents a verifiable and documented significant deviation from conventional practice.

The final result for determining the total points depends on the building design, location, orientation, materials, envelope definition and systems used.

Below are the **MEDICLINICS** elements and their energy consumption, which can be included in the simulation and can help to reduce the energy consumption of the building, contributing to compliance with LEED criteria. The calculation has been based on the power of the equipment and the drying times, according to the technical data sheets.

REFERENCE	DESCRIPTION	ENERGY CONSUMPTION (kWh/drying)
UCM092A	All-in-one water tap and tumble dryer. Including finish variety -B.	0,0042
UCM093A	Water tap and dryer all-in-one. Incluye the finish variety -B.	0,0042
M09A	Machflow hand dryer. Includes all finish varieties -B, -C, -CS and accessories -FIL, -I.	0,0042
M19A	Machflow Plus hand dryer with brushless motor. Includes all finish varieties -A, -AB, -AC, -ACS, and accessories -FIL, -I.	0,0024
M14A	Dualflow hand dryer. Includes all varieties of finishes -B, -C, -CS.	0,0042
M24A	Dualflow Plus hand dryer with brushless motor.	0,0024

	Includes all finish varieties -B, -C, -CS, and accessories -DES, -I.	
M17A	Speedflow Plus hand dryer. Includes all varieties of finishes -B, -C, -CS, and accessories -I.	0,0024
M23A	J-flow hand dryer. Includes all varieties of finishes -B, -CS, and -BT.	0,0042

Assessment procedure**BD+C, ID+C tools: Energy Simulation**

Demonstrate, by means of an energy simulation, the improvement in energy efficiency of the proposed building compared to a reference building (defined according to ANSI / ASHRAE / IESNA 90.1-2.010, Appendix G, with errata).

EBOM tools: Energy efficiency shall be assessed by comparison of energy bills against:

- Typologies valid for Energy Star Portfolio Manager: Energy Star Portfolio Manager score or rating.
- Typologies not valid for Energy Star Portfolio Manager:
 - o Comparison with the national average of buildings of the same type. If no such average is available, three buildings of the same typology can be compared.
- Comparison with historical consumption data of the building.

Exemplary performance (extra score):

- LEED BD+C, option1: Achieve at least 54% energy savings compared to the reference building.
- LEED ID+C: Achieve energy savings of 32% compared to the reference building.
- LEED EBOM:
 - o Projects eligible for Energy Star Portfolio Manager: Achieve a score of 97 in Energy Star Portfolio Manager.
 - o Projects not valid for Energy Star Portfolio Manager: Compare with three similar buildings and consumption history and achieve 47% savings.

Analysis example

NA

Supporting documents

- *all-in-one-UCM092A Ver. 07-22*
 - *all-in-one-UCM092AB Ver. 07-22*
 - *all-in-one-UCM093A Ver. 07-22*
 - *all-in-one-UCM093AB Ver. 07-22*
 - *mediclinics-dryers-M09A-B-C-CS Rev 03-21*
 - *mediclinics-dryers-M14A-CS-B Rev 10-21*
 - *mediclinics-dryers-M17A-B-CS Rev 03-21*
 - *mediclinics-dryers-M23A-CS-B-BT- 1500W 231023_ES*
 - *mediclinics-dryres-M19A-C-CS-B - 1100W - rev 03-21*
 - *mediclinics-dryers-M24A-CS-B - 1100W Rev 10-21*

Reference standard

- ASHRAE 90.1-2010



CATEGORY MATERIALS AND RESOURCES (MR)

MR Waste yield (EB, SEB, REB, HEB, DCEB, WEB) – EBOM v4.1

Objective	Analyse and reduce the waste generated by building occupants and the percentage of waste disposed of in landfills and incinerators.
Compliance information	Hand dryers can replace paper towels, which reduces waste generation. They therefore contribute to an improved credit score.
Assessment procedure	<p>LEEDv4.1 pilot requirements:</p> <p>Provide storage spaces for recyclable waste (at least paper, cardboard, glass, plastics and metals), as well as batteries and lamps, for proper management. Analyse and count the waste generated and recycled per year. These values will be entered into the ARC tool, which will calculate the score based on waste generated and waste recycled.</p>
Analysis example	N/A
Supporting documents	<i>Data sheets</i>
Reference standard	NA



CATEGORY INNOVATION IN DESIGN (ID)



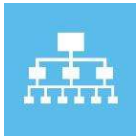
Innovation

(NC, CS, SNC, RNC, HNC, HCNC, DCNC and WNC)

Objective	Reward projects that achieve exceptional or innovative performance in meeting LEED requirements.
Compliance information	<p>MEDICLINICS can contribute to meeting the requirements of exemplary performance in the credits:</p> <ul style="list-style-type: none"> • WE - Reduction of indoor water usage. • EA - Optimisation of energy efficiency.
Assessment procedure	<p><u>To achieve the five innovation points, at least one pilot credit, at least one innovation credit and no more than two exemplary performance credits must be substantiated.</u></p> <p><u>Option 3: Exemplary Performance – EP</u></p> <p>Some LEED credits give the option to earn an extra point for Exemplary Performance (EP) if the requirements of the credit are exceeded, achieving the values defined by LEED as Exemplary Performance (EP). This makes it possible to earn up to 2 points (for 2 different credits). The values defined as Exemplary Performance have been marked in this sheet as EP in the relevant credits.</p>
Analysis example	NA
Supporting documents	<i>See relevant requirements</i>
Reference standard	NA

REQUIREMENTS OVERVIEW

BREEAM



MANAGEMENT

- MAN 03, Construction Site Impacts
- MAN 03, Responsible Construction Practices



WATER

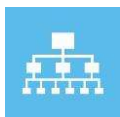
- WAT 01, Water Consumption
- WAT 04, Water Efficient Equipment: washbasin taps



INNOVATION

- INNOVATION

BREEAM ES Environmental Categories



Manage
ment



Health &
wellbeing



Energy



Transport



Water



Materials



Waste



Land use
and
ecology



Pollution



Innovation

BREEAM ES Certification Standards

UR
NC

BREEAM ES Urban planning
BREEAM ES New Construction

VIV

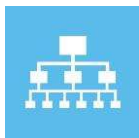
BREEAM ES Vivienda

USO

BREEAM ES In-use

REQUIREMENTS SHEET

BREEAM ES



CATEGORY MANAGEMENT

- **MAN 03, Construction Site Impacts**
(BREEAM ES NEW CONSTRUCTION 2015)
- **MAN 03, Responsible Construction Practices**
(BREEAM ES DWELLINGS 2020)

Objective	Recognise and encourage environmentally-friendly management of construction sites in terms of resource use, energy consumption and pollution.
Compliance information	<p>MEDICLINICS products are delivered on pallets made entirely of recycled and/or recovered wood.</p> <p>However, this is only a partial contribution to compliance with the credit as the reduction percentage depends on all the materials installed and on the completion of the necessary reports by the site's sustainability officer.</p>
Assessment procedure	<p>BREEAM New Construction and Dwellings:</p> <p><u>Transport of building materials and waste (one point)</u> The building is evaluated against this criterion by stating in an independent report total fuel consumption (litres) and total carbon dioxide emissions (kg CO₂ equivalent emissions) associated with the transport and the total distance travelled (km) to the building.</p> <p><u>Timber procurement (one point)</u> The building is evaluated against this criterion by providing confirmation that all the wood used for the palletisation of the product is "legally harvested and traded timber" or that it has a recognised certification system (FSC, PEFC) or its schemes endorsed (SFI, etc.).</p> <p>If they do not have the seal of the certification system, the supplier is to confirm by letter that the timber used has been legally harvested and traded.</p>
Analysis example	NA
Supporting documents	<ul style="list-style-type: none"> - Moa Pallets Certificate
Reference standard	<ul style="list-style-type: none"> - <i>National Atmospheric Emissions Inventory (Netcen, 2005) based on DTI data combined with LRT factors as functions of average vehicle speed derived from test data from real test cycles.</i> - <i>Summary of UK DTI Energy Statistics 2004 and carbon factors for fuels from UKPIA (2004).</i> - <i>Guidelines for Corporate Reporting of Greenhouse Gas Emissions, DEFRA, Continuing Survey of Road Goods Transport 2001.</i>



CATEGORY WATER

- **WAT 01, Water Consumption**
(BREEAM ES NEW CONSTRUCTION 2015, BREEAM ES DWELLINGS 2020)
- **WAT 04, Water Efficient Equipment: washbasin taps**
(BREEAM ES IN-USE COMMERCIAL V6 2021)

Objective Reduce drinking water usage for sanitation and watering in the building through the inclusion of water-efficient appliances and water recycling systems.

Compliance information The following components of the **MEDICLINICS** all-in-one water tap and hand dryer product range contribute to the achievement of the requirements.

Below are the flow rates of each model.

MODEL	FLOW (l/min)
UCM092A	5
UCM093A	5.7 / 1.89 / 1.3
GA024BTM	5.7 / 1.89 / 1.3

The washbasin taps contribute to the evaluation of the criterion according to the percentage reduction compared to the baseline or reference case:

- Washbasin tap in commercial use: 6 l/min

The UCM093A and GA024BTM models can achieve different flow rates with the addition of accessories such as aerators or flow limiters as shown in the table above. However, this is a partial contribution to compliance with the credit as the percentage reduction depends on the sum of all the sanitary fittings and not just the washbasin taps.

Either version can be used to contribute to compliance in commercial use, although the lower the flow rate, the greater the contribution to credit compliance.

Assessment procedure

BREEAM New Construction and Dwellings:

The objective of this Requirement is to reduce demand for drinking water by installing more efficient sanitary fixtures and to offset final demand for non-drinking water by installing greywater or rainwater systems.

The calculation will take into account the following domestic sanitary appliances where specified:

- a. Toilets.
- b. Urinals.
- c. Taps (washbasin and, where specified, kitchen taps, waste disposal units).
- d. Showers.
- e. Baths.
- f. Dishwashers (domestic and commercial).
- g. Washing machines (domestic and commercial/industrial).

The BREEAM calculator calculates the score based on the level of efficiency achieved by both the sanitary appliances and the non-drinking water demand met by greywater or rainwater systems.

EXEMPLARY LEVEL:

- Office, industrial, commercial and educational buildings: high percentages of improvement (60-65% depending on the precipitation area).
- Other types of buildings (including dwellings): when the efficiency level of sanitary appliances reaches level 5 (corresponding to 3 l/min for washbasins) and 95% of toilet/urinal flushing and watering demand is met using non-drinking recycled water sourced from rainwater or greywater systems.
- Dwellings: the overall component level achieved is 5 and a recirculation system is used to prevent hot water usage at taps at a lower temperature than the one selected by the user.

BREEAM In-Use:

100% of washbasin taps are low consumption (≤ 6 l/min) for 1 point.
 50% have ≤ 4 l/min and the rest ≤ 6 l/min for 2 points.
 100% have ≤ 4 l/min for 3 points.
 100% have ≤ 4 l/min and automatic control for 4 points.

Analysis example

NA

Supporting documents

- *all-in-one-UCM092A Ver. 07-22*
- *all-in-one-M93A - 11.24*
- *Data Sheet BtM-GA024BTM - 11.24*

Reference standard

NA



CATEGORY INNOVATION

INNOVATION (BREEAM ES NEW CONSTRUCTION 2015)

Objective	Incentivise innovation in the building industry by recognising sustainability improvements that are not rewarded by the Standard Requirements.
Compliance information	<p>MEDICLINICS can contribute to meeting the exemplary level in the requirements:</p> <ul style="list-style-type: none"> • WAT 01, Water Consumption: 1 point <p>NOTE: See exemplary level criteria in the relevant requirement.</p>
Assessment procedure	<p>Up to at most 10 innovation points can be earned for a combination of the following options:</p> <p><u>Exemplary level in Existing Requirements</u> Some BREEAM credits give the option to gain extra points by demonstrating exemplary performance through the achievement of the exemplary level criteria defined in those credits.</p> <p><u>Approved innovations</u> A bonus point may be awarded for each BREEAM ES Approved Innovation Application provided that the criteria defined in an approved innovation application form are met.</p>
Analysis example	NA
Supporting documents	<i>See relevant requirements</i>
Reference standard	NA